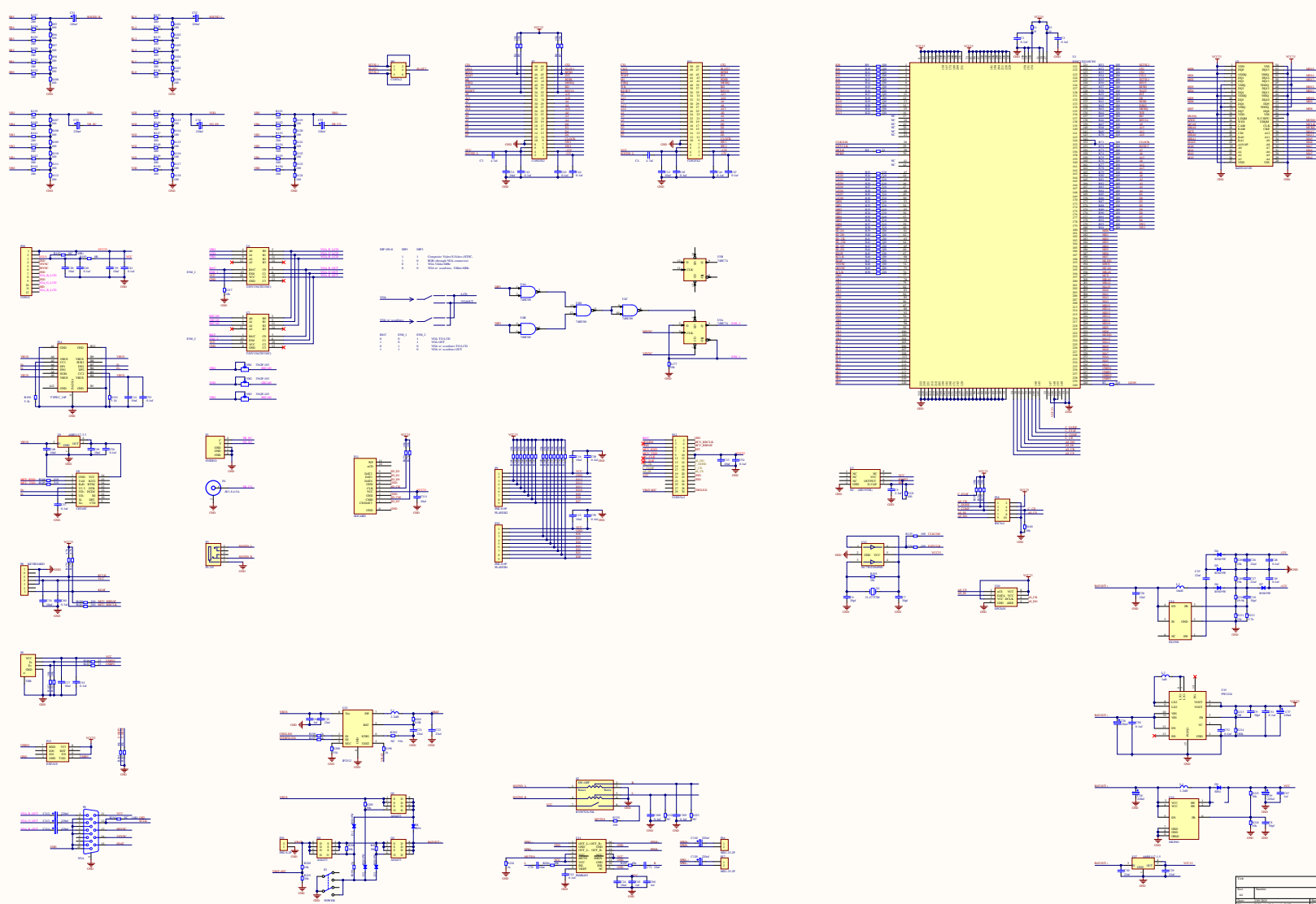
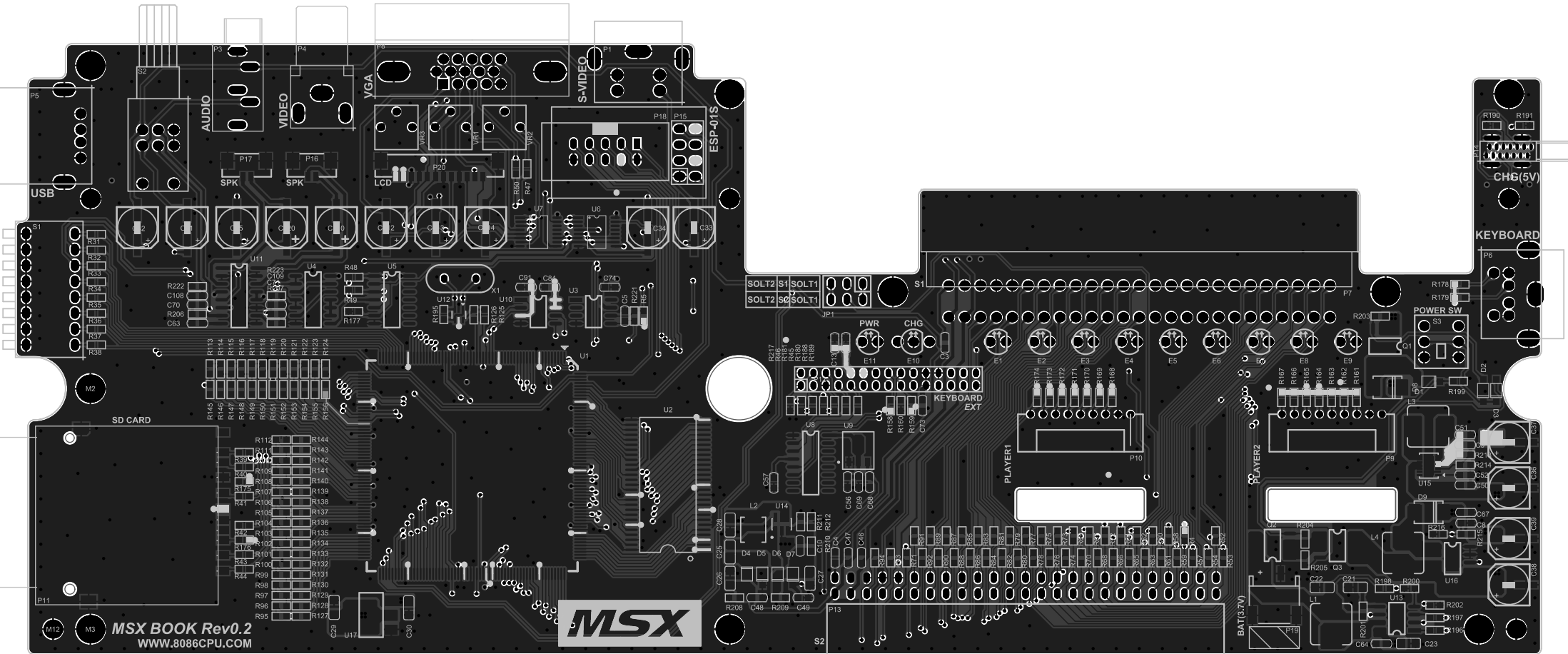


DIP-SW	FUNCTION	STATUS	DESCRIPTION
1	CPU Clock	OFF	Standard mode 3.58MHz
		ON	Custom Speed mode 4.10MHz to 8.06MHz (10.74MHz on system bus) <ul style="list-style-type: none"> Press [F12] key to change clock type (3.58MHz => 5.37MHz => Custom Speed) The external clock is set on [Dip0] to CPU by default Turbo Power is 5.27MHz like the original specification A special hybrid clock (Turbo MegaS3) is enabled by default
2 / 3	Video Output	OFF / OFF	Composite / S-Video <ul style="list-style-type: none"> 15kHz 50Hz/60Hz, interlaced video signal
		OFF / ON	RGB w/ Audio Out. (a mono signal inside the video cable) <ul style="list-style-type: none"> 15kHz, 50Hz/60Hz, interlaced video signal, requires a VGA to SCART cable
		ON / OFF	VGA Mode for LED TV or LED Display <ul style="list-style-type: none"> Progressive video signal 31kHz / 50Hz/60Hz with the ability to set the pixel ratio 1:1 at 60Hz
		ON / ON	VGA+ Mode for CRT Monitor (drgpy output) (hardware scanlines on Zenix Neo) <ul style="list-style-type: none"> Progressive video signal 31kHz / 50Hz/60Hz / SETSMART_D01 must be executed to force 60Hz
4	Cartridge Slot-1	OFF	External Slot-1 <ul style="list-style-type: none"> Activated like default
		ON	Internal ESE-MegaSCC+ 1024kB (shared w/ the 2nd half of ESE-MegaSCC+ Slot-2) <ul style="list-style-type: none"> External Slot-1 is disabled Menu: the CRT toggle is (Scroll Lock) key (disabled by default)
5 / 6	Cartridge Slot-2	OFF / OFF	External Slot-2 <ul style="list-style-type: none"> Activated like default
		OFF / ON	Internal ESE-MegaRAM ASCII-8K 1024kB <ul style="list-style-type: none"> External Slot-2 is disabled
		ON / OFF	Internal ESE-MegaSCC+ 2048kB <ul style="list-style-type: none"> External Slot-2 is disabled
		ON / ON	Internal ESE-MegaRAM ASCII-16K 2048kB <ul style="list-style-type: none"> External Slot-2 is disabled
7	Internal Mapper	OFF	Internal 2048kB RAM <ul style="list-style-type: none"> Activated like default
		ON	Internal 4096kB RAM
8	Internal MegaSD	OFF	Disabled
		ON	Enabled <ul style="list-style-type: none"> Activated like default

LED	Status	
1	Flashing SD activity, Flash memory activity	
2	ON 4Mb RAM Mapper	
3/4	OFF	2Mb RAM Mapper
	OFF/OFF	External SLOT 2 Enabled
	OFF/ON	ESE-MegaRAM ASCII 8K
	ON/OFF	ESE-MegaSCC+
ON/ON	ESE-MegaRAM ASCII 16K	
5	OFF	External SLOT 1 Enabled
	ON	ESE-SCC+
6/7	OFF/OFF	Composite Video/S-Video output
	OFF/ON	15kHz RGB+Audio through VGA connector
	ON/OFF	VGA
8/9	ON/ON	VGA with scanlines
	OFF/OFF	Standard 3.58MHz Clock
	OFF/ON	Turbo 5.37MHz Clock
	ON/OFF	



Rev:	1.0
Date:	2010.01.01
Author:	...
...	...



MSX BOOK Rev0.2
WWW.8086CPU.COM



R190 R191
CHG(5V)

KEYBOARD

POWER SW

PLAYER1

PLAYER2

SD CARD

SOLT2 S1 SOLT1
SOLT2 S2 SOLT1

PWR CHG

KEYBOARD EXT

BAT(3.7V)

S2

P13

C26

C25

C28

D4

D5

D6

D7

C27

U14

U8

U5

U6

C15

E11

E10

C3

E1

E2

E3

E4

E5

E6

E7

E8

E9

R187

R188

R189

R190

R191

R192

R193

R194

R195

R196

R197

R198

R199

R200

R201

R202

R203

R204

R205

R206

R207

R208

R209

R210

R211

R212

R213

R214

R215

R216

R217

R218

R219

R220

R221

R222

R223

R224

R225

R226

R227

R228

R229

R230

R231

R232

R233

R234

R235

R236

R237

R238

R239

R240

R241

R242

R243

R244

R245

R246

R247

R248

R249

R250

R251

R252

R253

R254

R255

R256

R257

R258

R259

R260

R261

R262

R263

R264

R265

R266

R267

R268

R269

R270

R271

R272

R273

R274

R275

R276

R277

R278

R279

R280

R281

R282

R283

R284

R285

R286

R287

R288

R289

R290

R291

R292

R293

R294

R295

R296

R297

R298

R299

R300

R301

R302

R303

R304

R305

R306

R307

R308

R309

R310

R311

R312

R313

R314

R315

R316

R317

R318

R319

R320

R321

R322

R323

R324

R325

R326

R327

R328

R329

R330

R331

R332

R333

R334

R335

R336

R337

R338

R339

R340

R341

R342

R343

R344

R345

R346

R347

R348

R349

R350

R351

R352

R353

R354

R355

R356

R357

R358

R359

R360

R361

R362

R363

R364

R365

R366

R367

R368

R369

R370

R371

R372

R373

R374

R375

R376

R377

R378

R379

R380

R381

R382

R383

R384

R385

R386

R387

R388

R389

R390

R391

R392

R393

R394

R395

R396

R397

R398

R399

R400

R401

R402

R403

R404

R405

R406

R407

R408

R409

R410

R411

R412

R413

R414

R415

R416

R417

R418

R419

R420

R421

R422

R423

R424

R425

R426

R427

R428

R429

R430

R431

R432

R433

R434

R435

R436

R437

R438

R439

R440

R441

R442

R443

R444

R445

R446

R447

R448

R449

R450

R451

R452

R453

R454

R455

R456

R457

R458

R459

R460

R461

R462

R463

R464

R465

R466

R467

R468

R469

R470

R471

R472

R473

R47

