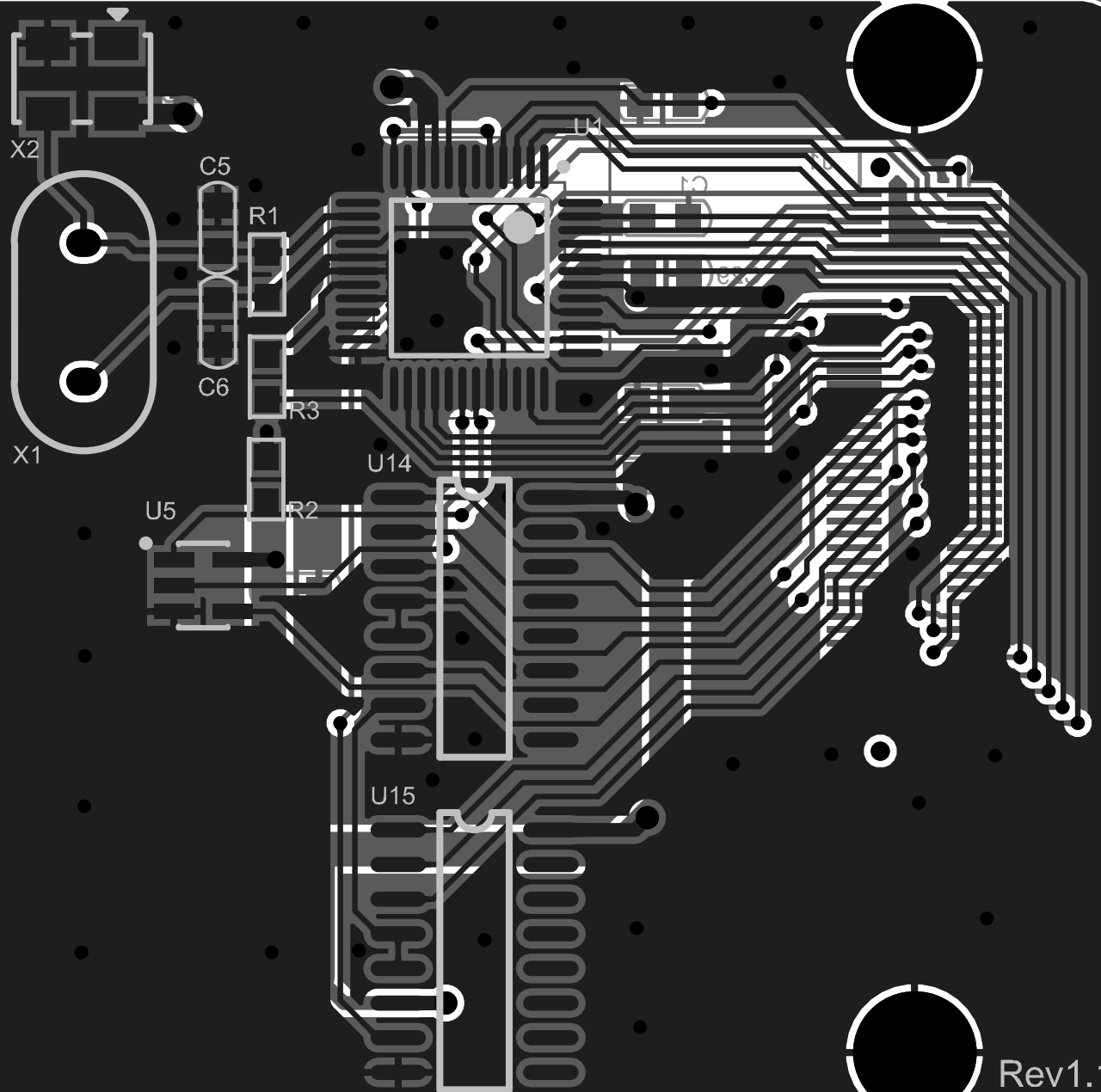


UART WITH 16-BYTE FIFO's

- 3F8H (COM1)
- IRQ4

OUTPUT(TTL):

- RxD -- GIO1
- TxD -- GIO2
- DCD# -- GIO3
- CTS# -- GIO4
- RTS# -- GIO5
- DTR# -- GIO6
- DSR# -- GIO7
- RI# -- GIO8



Serial Adapter

Rev1.1

| Comment | Description | Designator | Footprint | LibRef | Quantity |
|------------|-------------|--------------------|------------|------------|----------|
| 47pf | | C1, C2 | C0603 | 0CAP | 2 |
| 20pf | | C5, C6 | C0603 | 0CAP | 2 |
| 10uf | | C24, C25 | C0603 | 0CAP | 2 |
| 0.1uf | | C26, C27, C28, C29 | C0603 | 0CAP | 4 |
| CON40x2 | | J1 | BTB0.5-80P | CON40x2 | 1 |
| CON1 | | M1, M2, M3, M4 | M2.5 | CON1 | 4 |
| 1M | | R1 | R0603 | 0RES | 1 |
| 4.7k | | R2 | R0603 | 0RES | 1 |
| 33 | | R3 | R0603 | 0RES | 1 |
| ST16C550 | | U1 | LQFP48 | ST16C550 | 1 |
| 74LVC1G125 | | U5 | SOT23-5 | 74LVC1G125 | 1 |
| 74HC138 | | U14, U15 | SO-16 | 74LS138 | 2 |
| 1.8432M | | X1 | XTAL | CRYSTAL | 1 |
| 1.8432M | | X2 | CRY-5032 | CRYSTAL-4P | 1 |